



Self-curing Adhesive Resin Cement

Super-Bond

SINCE 1982

STRONG, DURABLE AND RELIABLE
LONG CLINICAL HISTORY OF SUCCESS WORLDWIDE
VERSATILE CLINICAL APPLICATIONS



 **SUN MEDICAL**
www.sunmedical.co.jp

Super-Bond



Fixation of a Mobile Tooth

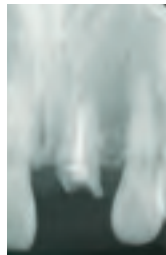
Without a wire or a splint



Repair of a Fractured Tooth

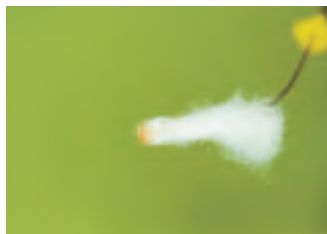
Durable bonding to dentin & enamel

13 years later



Core Cementation

Protecting the root from fracture



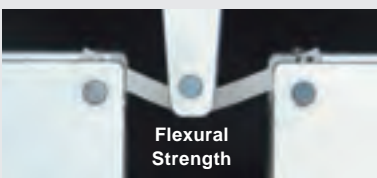
8 years later

Repair of a Perforation

A small perforation can easily be sealed by cementing a core with Super-Bond.

REMARKABLE FEATURES

- Excellent bonding performance to enamel and dentin, metal, porcelain and dental resins.
- Versatile clinical applications.
- A high quality hybrid layer eliminating hypersensitivity and protecting the pulp.



Flexural Strength

Excellent Resiliency

High resistance to occlusal impact stresses.



Curing From the Tooth Surface

Shows outstanding bond strength and sealing ability.

Made in Japan by  **SUN MEDICAL CO.,LTD.**

571-2 Furutaka-cho, Moriyama, Shiga, 524-0044, Japan Phone: +81-77-582-9981 Fax: +81-77-582-9984 <http://www.sunmedical.co.jp>