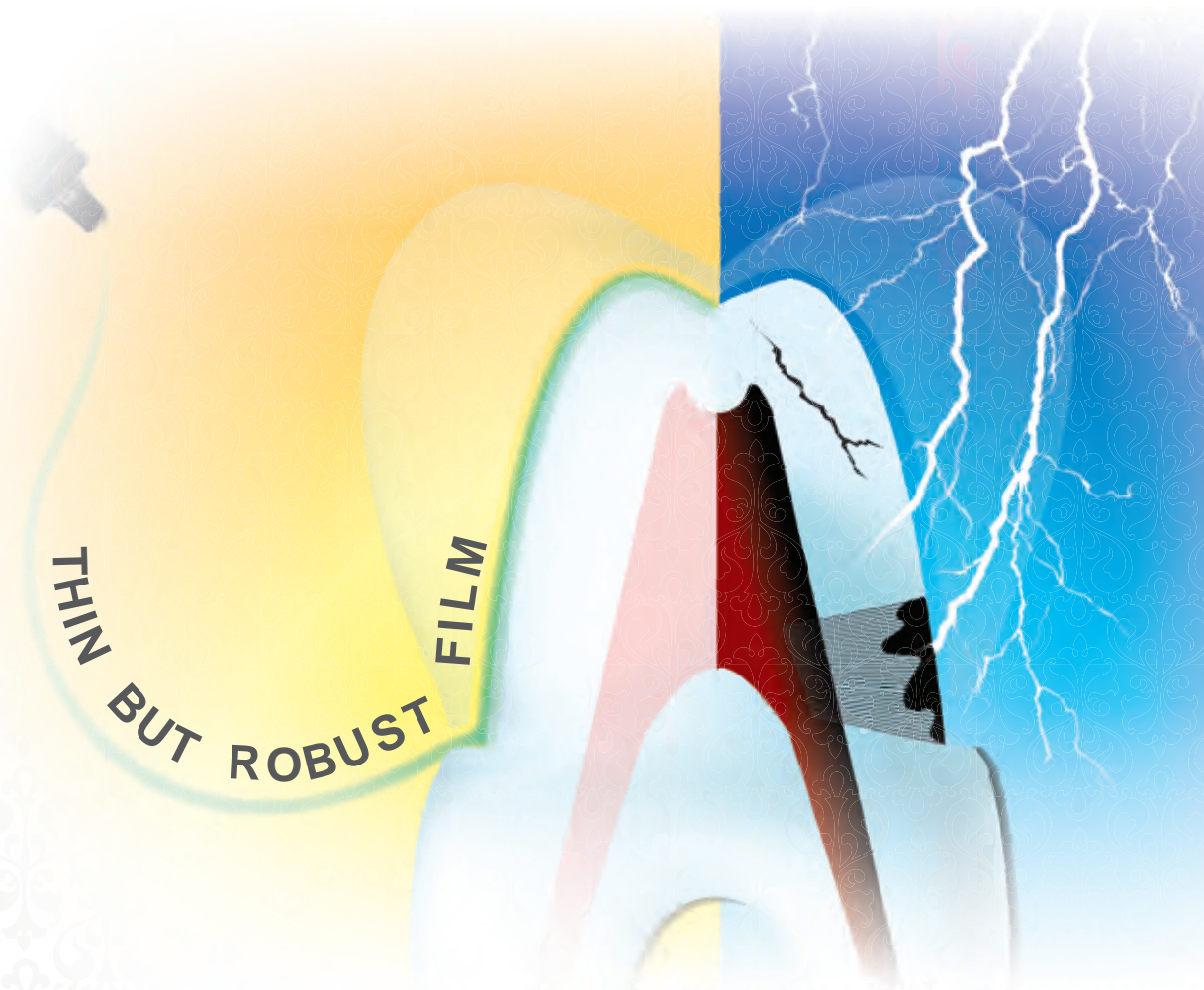


Protective Coat for Dentin
and Bonding Agent for Resin-based Restorations

Hybrid Coat

EXCELLENT COATING AND BONDING PERFORMANCE
VERSATILE CLINICAL APPLICATIONS
A HIGH-QUALITY HYBRID LAYER



No Etching, Just One Coat.
Eliminate Post-op Sensitivity and Secondary Caries.

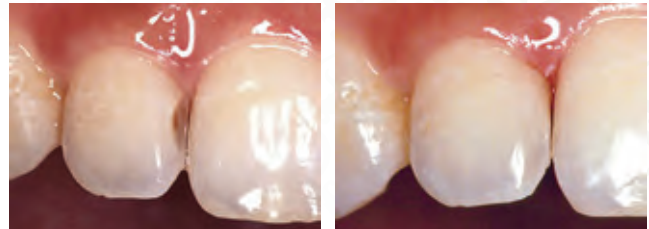
VERSATILE CLINICAL APPLICATIONS

Coating Restoration



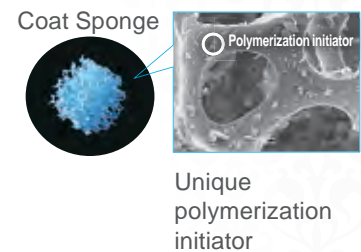
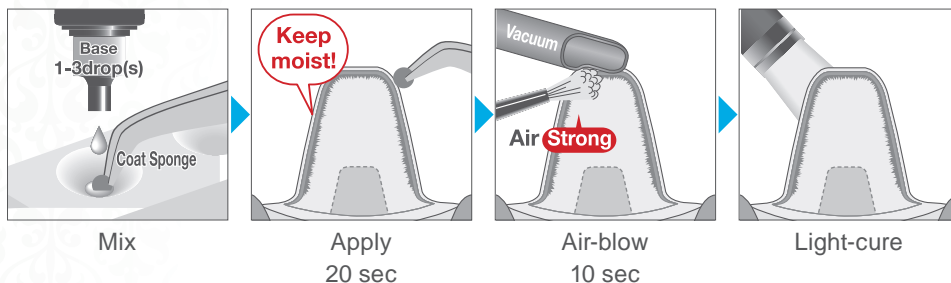
The thin but robust film of Hybrid Coat eliminates post-op sensitivity and secondary caries.

Bonding Restoration



The thin bonding layer results in esthetic margins, and it is ideal for anterior filling.

Clinical Procedure

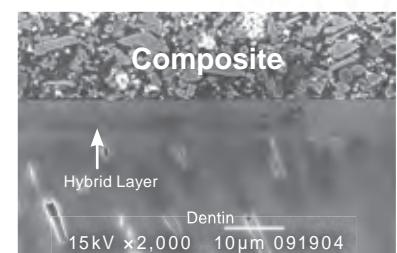


OUTSTANDING CHARACTERISTICS

Excellent for Both Coating and Bonding

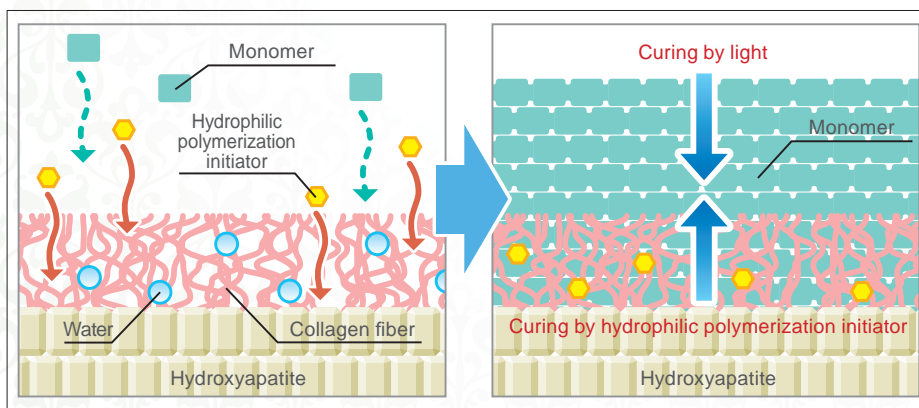
- Hybrid Coat penetrates the tooth to form 4-META hybrid layer and leaves the surface protective by a thin but robust film. The high-quality hybrid layer blocks both mechanical and chemical stimuli to dentin-pulp complex.
- The unique activator in the Coat Sponge enhances the polymerization even in the presence of humidity.

A high-quality hybrid layer

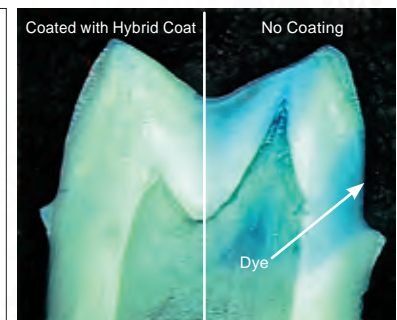


Provided by Dr. T. Nikaido, Tokyo Medical and Dental University

Curing Mechanism



Excellent sealing ability



Sealing ability on the abutment dentin after a dye penetration test